



BIG BAG FILLING STATION

FEATURES

- Quick and accurate weighting
- Upper tank's level can be controlled
- Number of sacks can be adjustable
- Weight value can be changed
- Easy mode option on control panel
- Number of weights can be stored in memory



FEED



BIOMASS



RENDERING



CHEMISTRY



BIG BAG FILLING STATION

Big bag filling machines can work with 500 kg to 2000 kg sacks and has 10 t/h to 20 t/h filling capacity.

The filling mouth of Yemmak big bag scales varies according to the type of product. Big bag scales are generally used in the packaging of chemical products.

Belt feeding system is used for filling non-free flowing powder and granular product into big bags. It does not allow the granular product to be broken.

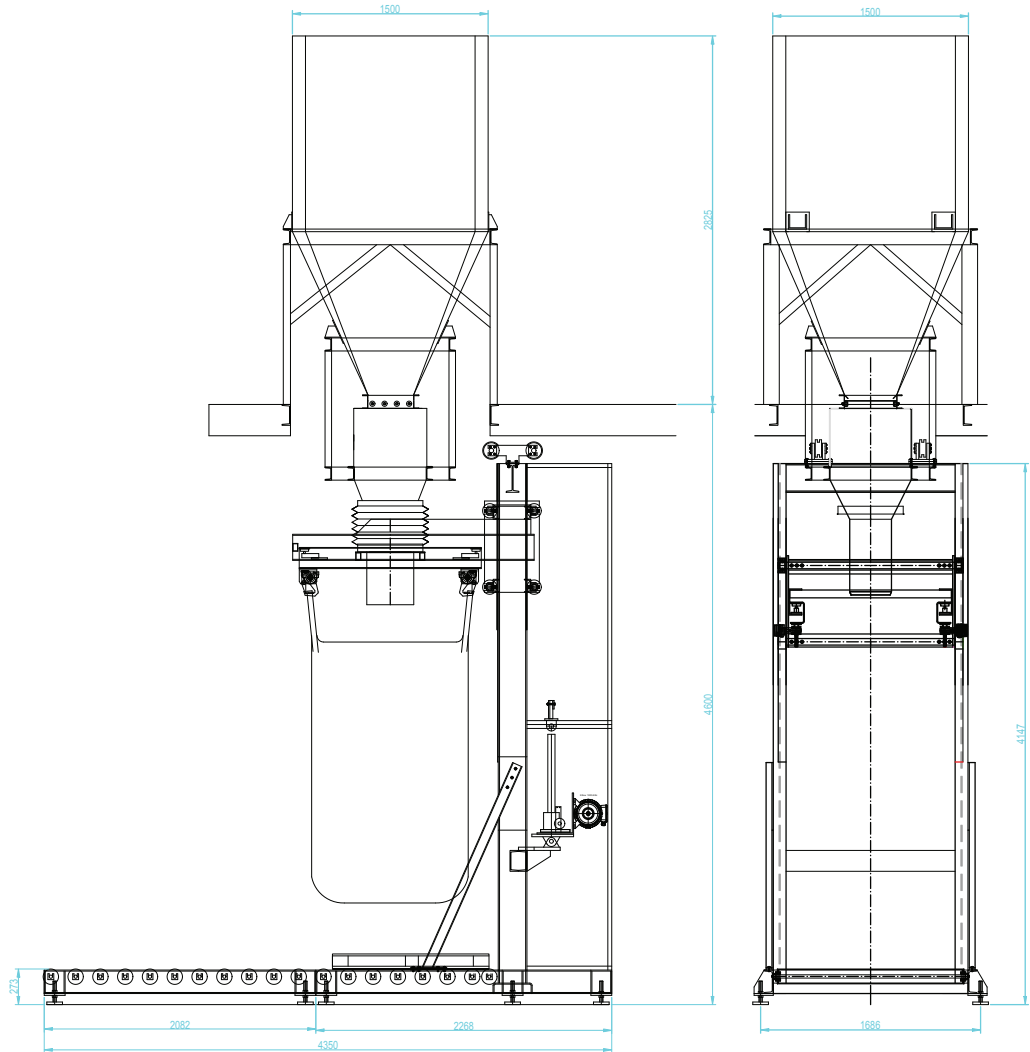
- Screw feeding system is used for bagging non-free flowing powder product.
- Vibro feeding system is used for filling the granular product into big bags.
- Free flow system is used for granular and granular products with easy fluidity

Sacking scale is completely electronic; users can get reports regarding the sacks' number and weights.



USAGE AREAS

- Packaging Lines



600 Evler Mah. Balıkesir Asf. Sol Taraf No: 96, 10201 Bandırma / Balıkesir

P: +90 266 733 83 63 (3 Lines) • F: +90 266 733 83 66

f in | yemmak.com

